

Definition

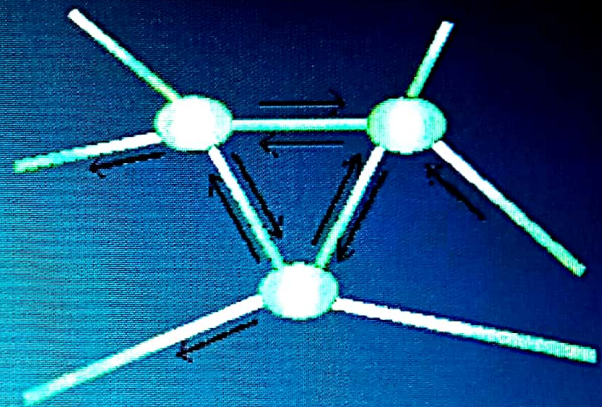
Artificial Intelligence(AI) is the intelligence of machines and the branch of computer science that aims to create it.

Textbooks define this field as "**the study and design of intelligent agents**".

DEFINITIONS



* A.I is a branch of computer sciences dealing with symbolic, Nonalgorithmic-Methods of problem solving.



* AI works with pattern matching methods which attempt to describe objects, events or processes in terms of their qualitative features and logical and computational Relationship.

27 people clipped this slide

What is Intelligence ?



- To respond to situations very flexibly.
- To make sense out of ambiguous or contradictory messages.
- To recognize relative importance of different elements of situations
- To find similarities between situations despite difference
- To draw distinctions between situations despite similarities which may link them.

History

Thinking machines and artificial beings appear in Greek myths.

Alan Turing's theory of computation formed the basis of development of the electronic computer and in turn aided the idea of AI research.

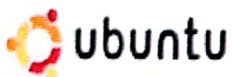
The field of AI research was founded at a conference on the campus of Dartmouth College in the 1956.

John McCarthy, one of the leaders of AI Research was regarded as "The Father of AI".

"Machines will be capable, within twenty years, of doing any work a man can do"

-Herbert Simon

Artificial Intelligence



35 people clipped this slide

Traits of an Intelligent System

Deduction, Reasoning & Problem Solving

Knowledge Representation

Planning & Learning

Natural Language Processing

Motion & Manipulation

Perception & Social Intelligence

Creativity

General Intelligence

20 people clipped this slide

Approaches

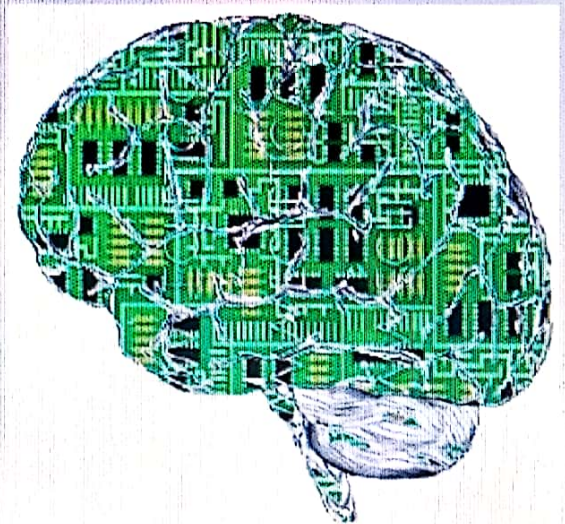
Cybernetics & Brain Simulation

Symbolic

Sub-Symbolic

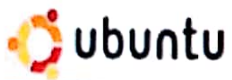
Statistical

Integrating the Approaches



Artificial Intelligence

6



6 of 19



Tools

Search & Optimization

Logic

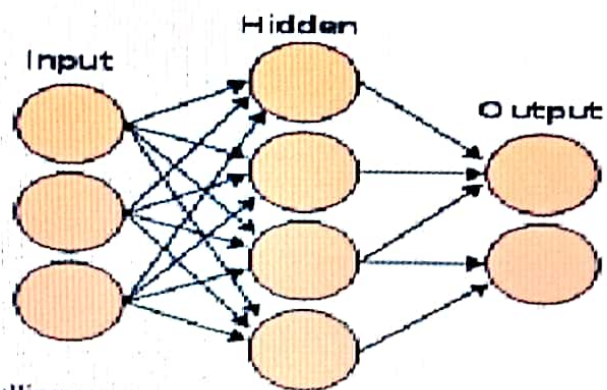
Probabilistic Methods for Uncertain Reasoning

Classifiers & Statistical Learning Methods

Neural Networks

Control Theory

Languages



Artificial Intelligence

Evaluating Progress

In 1950, Alan Turing proposed a general procedure to test the intelligence of an agent known as the Turing test.

The broad classes of outcome for an AI test are:

- Optimal
- Strong super-human
- Super-human
- Sub-human

Applications

Artificial intelligence has successfully been used in a wide range of fields:

- Medical Diagnosis
- Stock Trading
- Robot Control
- Law
- Scientific Discovery
- Video Games & Toys
- Web Search Engines.

16 people clipped this slide

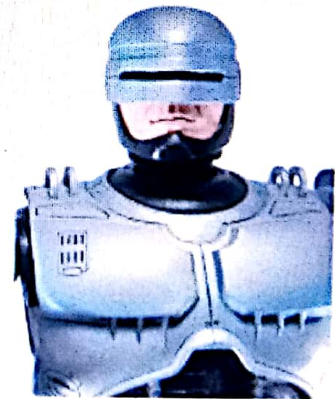
Predictions

AI is a common topic in both science fiction and projections about the future of technology and society.

Robot Rights

The impact of AI on society is a serious area of study for futurists.

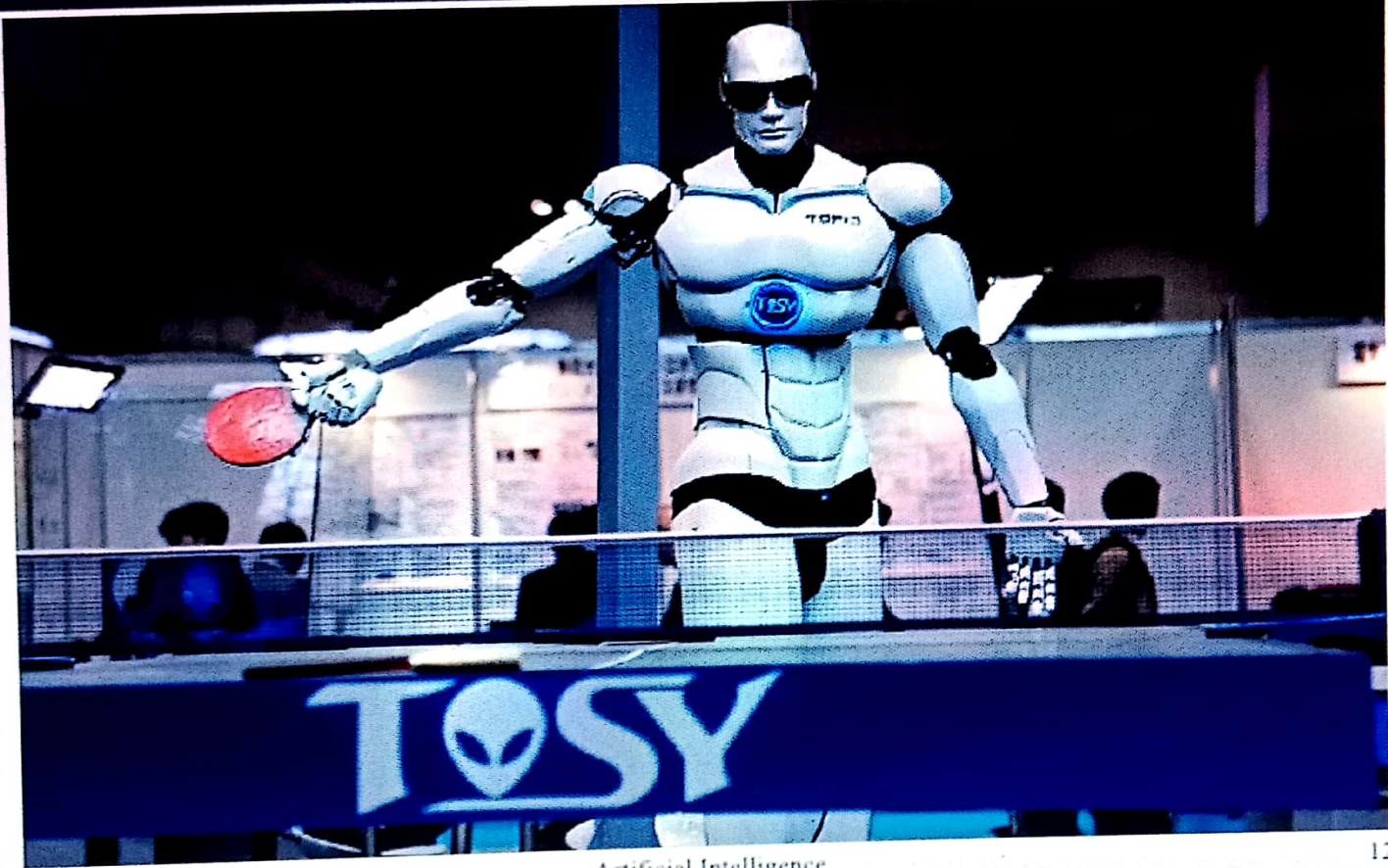
Transhumanism- RoboCop



Artificial Intelligence

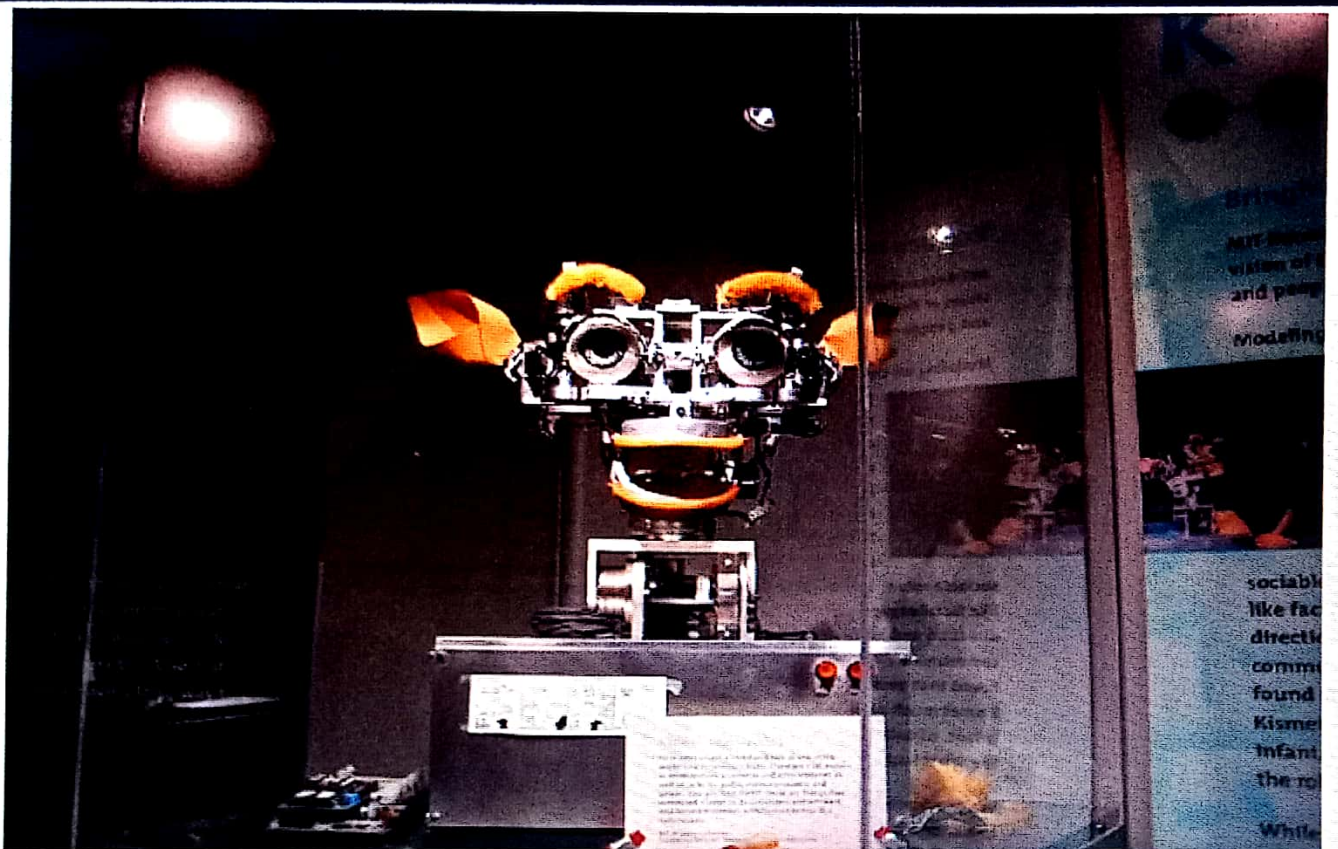
10

TOPIO



Artificial Intelligence

KISMET



Artificial Intelligence

Deep Blue Vs Garry Kasparov



Artificial Intelligence

15

12 people clipped this slide

A Small Live Example

Elliza

Artificial Intelligence

16