

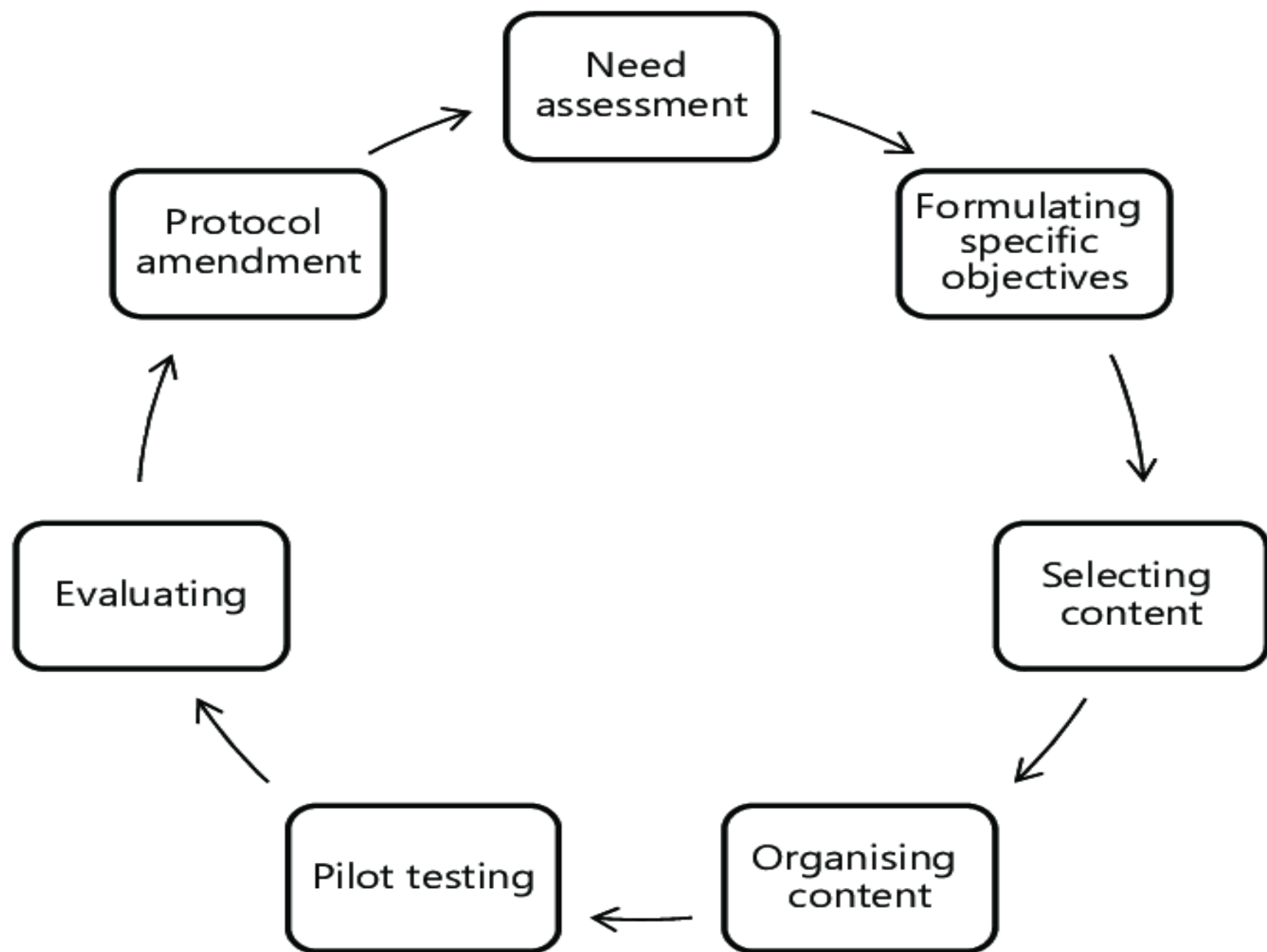
HILDA TABBA'S MODEL OF CURRICULUM

HILDA TABBA (1902-1967)



Hilda Taba

- **Hilda Taba** (7 December 1902 – 6 July 1967) was an architect, a curriculum theorist, a curriculum reformer, and a teacher educator.
- Taba was born in a small village in southeastern Estonia.
- Taba was introduced to **Progressive education ideas** at Tartu University by her philosophy professors.
- Taba was a student of **John Dewey**;
- She wrote a book entitled *Curriculum Development: Theory and Practice* (1962).



HILDA TABA MODEL

1. Diagnosis of Needs

2. Formulating Objectives

3. Selecting Content

4. Organizing Content

- Key Concepts
- Main Ideas
- Facts

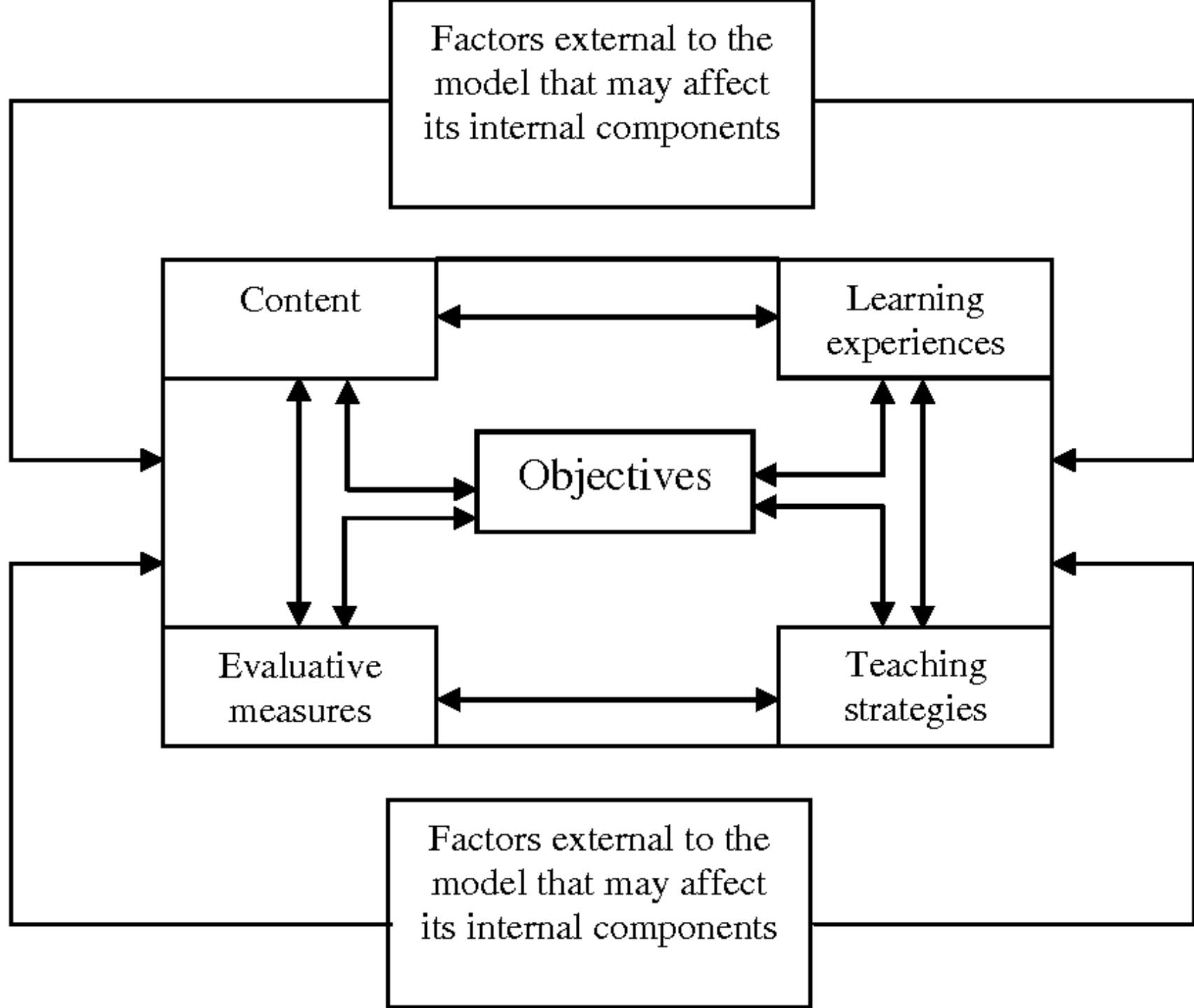
5. Selecting Learning Experiences

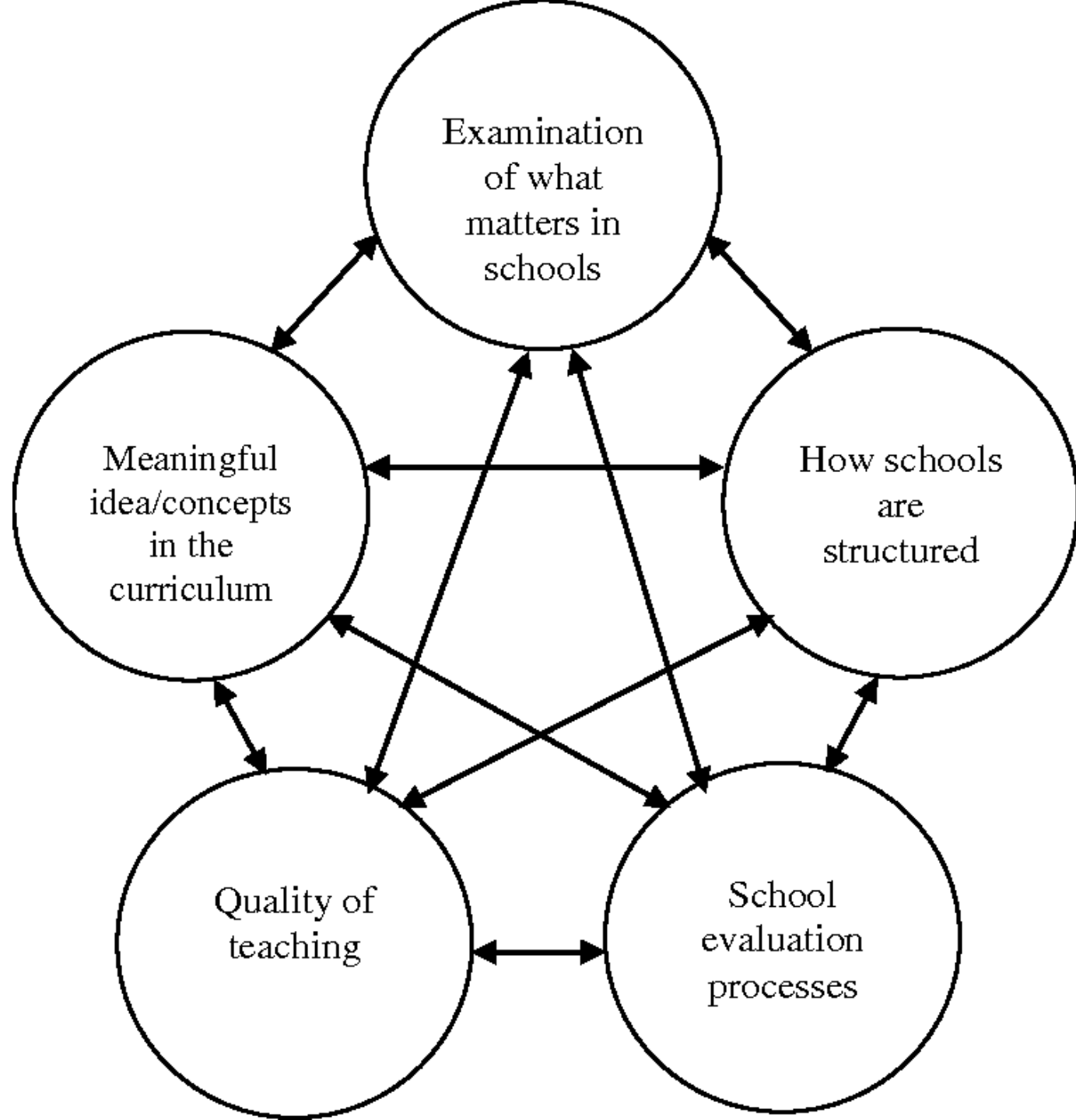
6. Organizing Learning Experiences

- Teaching Strategies for Cognitive Development
- Teaching Strategies for Affective Development

7. Evaluation

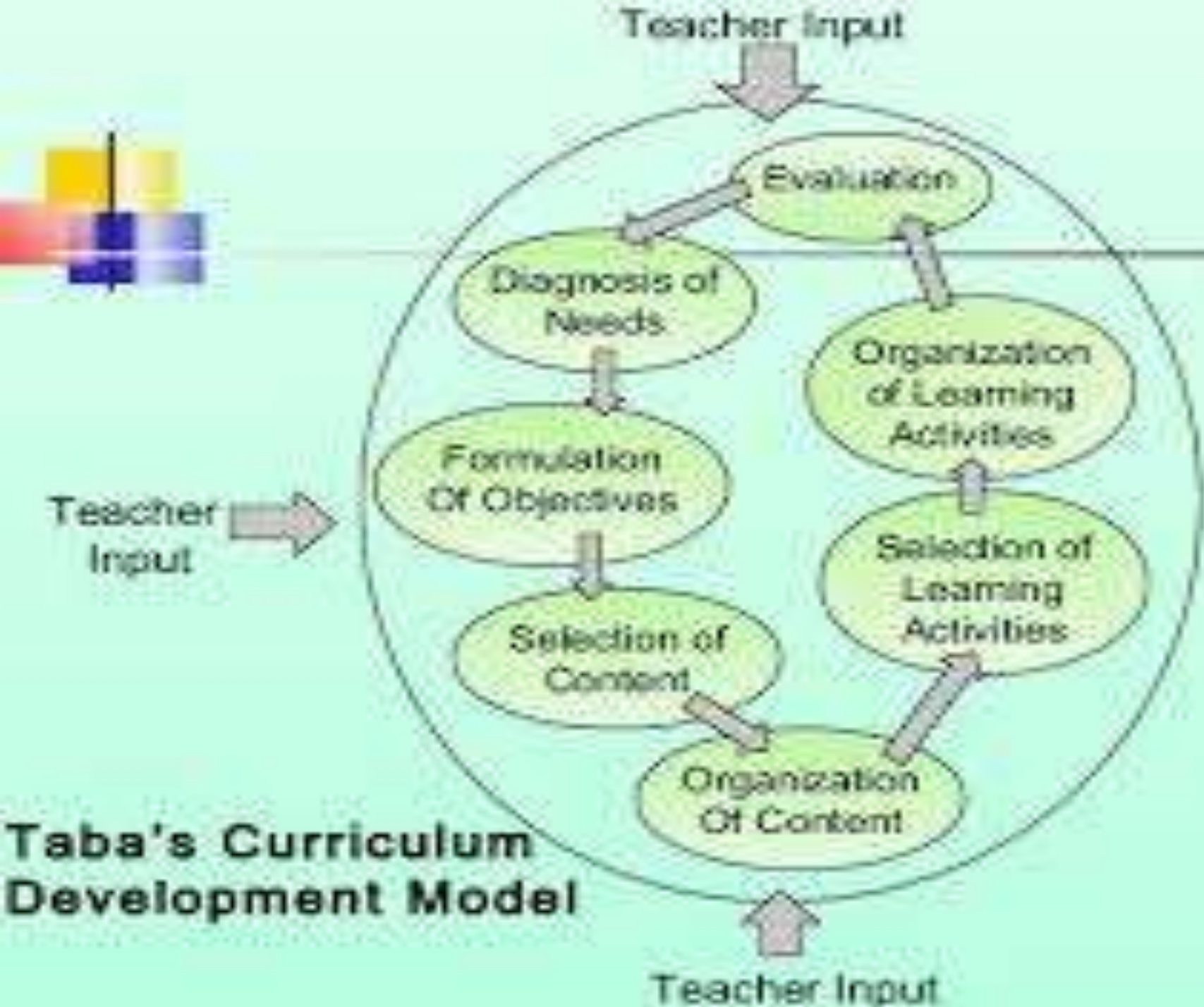




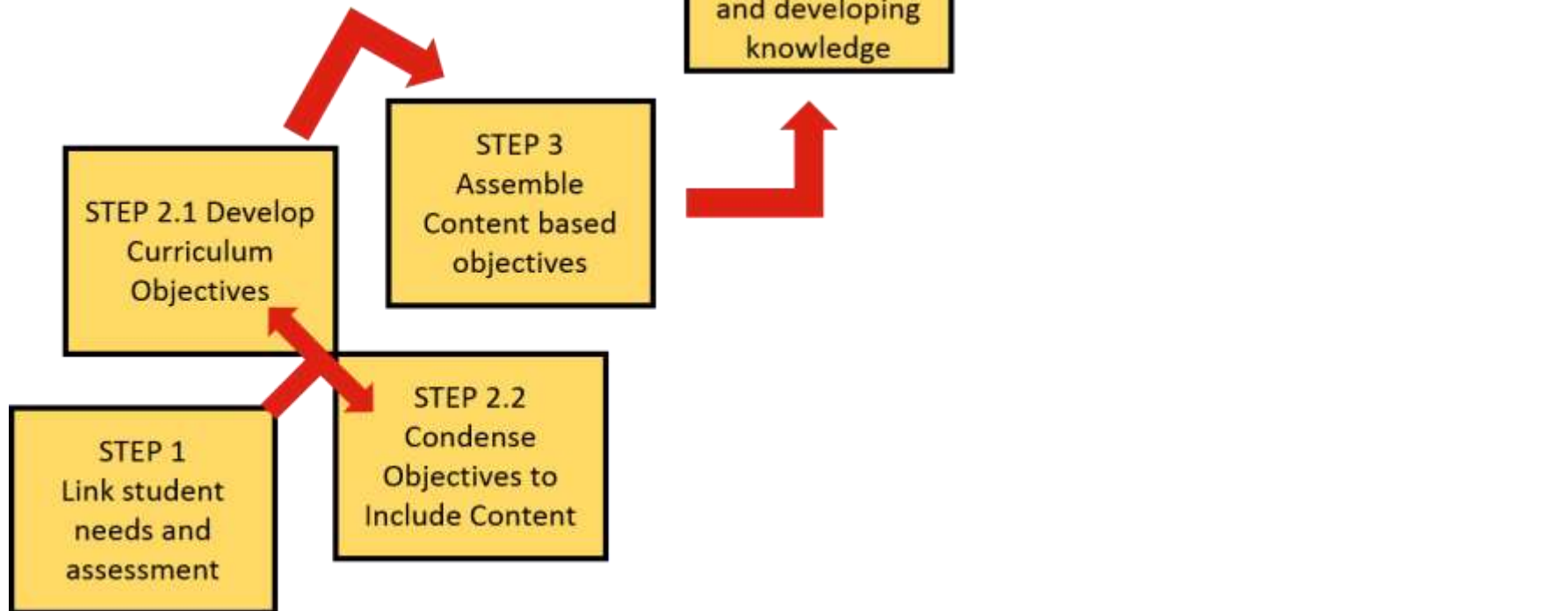


Steps in Taba model:

1. Diagnosis of learners needs and expectations of the larger society.
2. Formulation of learning objectives.
3. Selection of the learning content.
4. Organization of learning content.
5. Selection of the learning experiences.
6. Organization of learning activities.
7. Determination of what to evaluate and the means of doing it.



TABA MODEL 2.0



Application of the Taba model

- Taba model is currently used in most curriculum designs.
- Identifying the needs of the students.
- Developing objectives
- Selecting instructional method
- Organizing learning experiences
- Evaluating